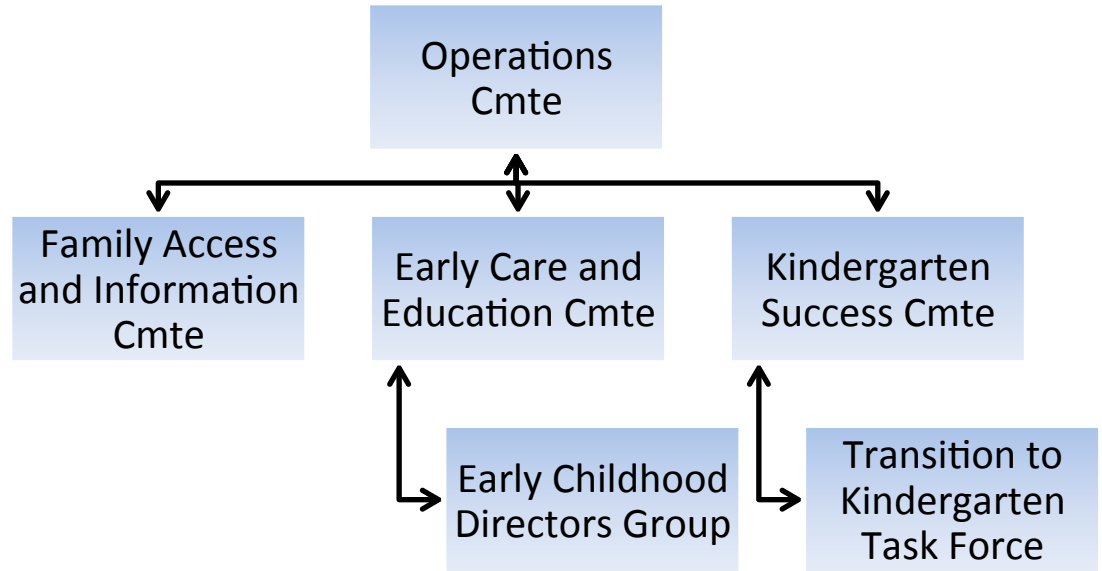


Partnership Members

In addition to Parents and other Community Members the follow organizations are represented:

- All Our Kin
- Arts for Learning CT
- Dept of Children & Families
- Dept of Social Services
- Gateway Community College
- Hamden Adult Ed
- Hamden Arts, Recreation & Culture
- Hamden Family Resource Centers
- Hamden Public Library
- Hamden Public Schools
- Hamden School Readiness
- Hamden Youth Services
- Monarch Therapeutic Services
- QVHD
- Reach Out
- Sleeping Giant Daycare
- Tender Care Learning Center
- Town of Hamden
- United Way of Greater New Haven
- VNA Nurturing Families Network

Hamden's Partnership for Young Children is a coalition of public and private agencies and community members who advocate for Hamden's young children. The Partnership oversees the implementation of Hamden's Early Childhood Plan and continues to examine what young children and their families need and how to improve the effectiveness of our service delivery system. The Partnership also provides oversight of the School Readiness and Preschool Development Grants. Hamden is one of 40 Discovery Communities that receives funding from the Graustein Memorial Fund in partnership with the State Office of Early Childhood and the Children's Fund of CT. The Partnership operates with the support of the Town of Hamden and the Hamden Public Schools who are integral to the efforts to effect community change and policy reform. United Way of Greater New Haven serves as the Partnership's



hamdenkids@gmail.com

203-407-7733

